



SUPERIOR AUTOMOTIVE WAREHOUSE, INC.



22 Pratt St Allston, MA 02134

Telephone (617) 783-9100

Commodity Book 2013

Marvel Mystery Oil



- Safe for use in:
- Synthetic Oil
 - Conventional Oil
 - Gasoline
 - 2-Cycle Engines
 - Diesel Fuel

Hundreds of Uses From Fuel Storage to Oil Stabilizer



Ultra Lube

Penetrating Oil & Lubricant



- Made from **AMERICAN** grown Renewable Crops
- Will Not Damage Plastic Parts Like Petroleum Based Products
 - No Harsh Odor
- Excellent As a General Lubricant and Also For Drilling/Tapping
- Resists High-Temp "Thin Down" Better Than Petroleum Based Products

12 - 12oz cans/cs.

10444



Available Online:

www.superiorboston.com/mpfp/cb2013.pdf

Additives & Treatments.....	5,6	Hoses (Air, Fuel, Heater, Vacuum)....	23
Batteries.....	25	Hose Clamps.....	9
Battery Terminals.....	25	Leak Detection.....	16
Brake Lines.....	1	Lighting.....	2,15
Chemicals.....	4	Lubricants.....	4,7,8
Cleaning Supplies.....	3,21,22	Oil.....	7,8,9
Exhaust Accessories.....	13,14	Snow Brushes.....	20
Funnels & Fuel Storage.....	15	Snow Plow Parts.....	19
Gloves.....	2	Specialty Tools.....	1,21
Grease Delivery.....	15	Tire Maint. & Repair.....	17,18
Grinding & Cutting.....	15	Wiper Blades.....	2

Contact your salesman to order and for promotional prices.

Top Brands Make Us YOUR Under Car Parts Source!



Ignition & Sensors



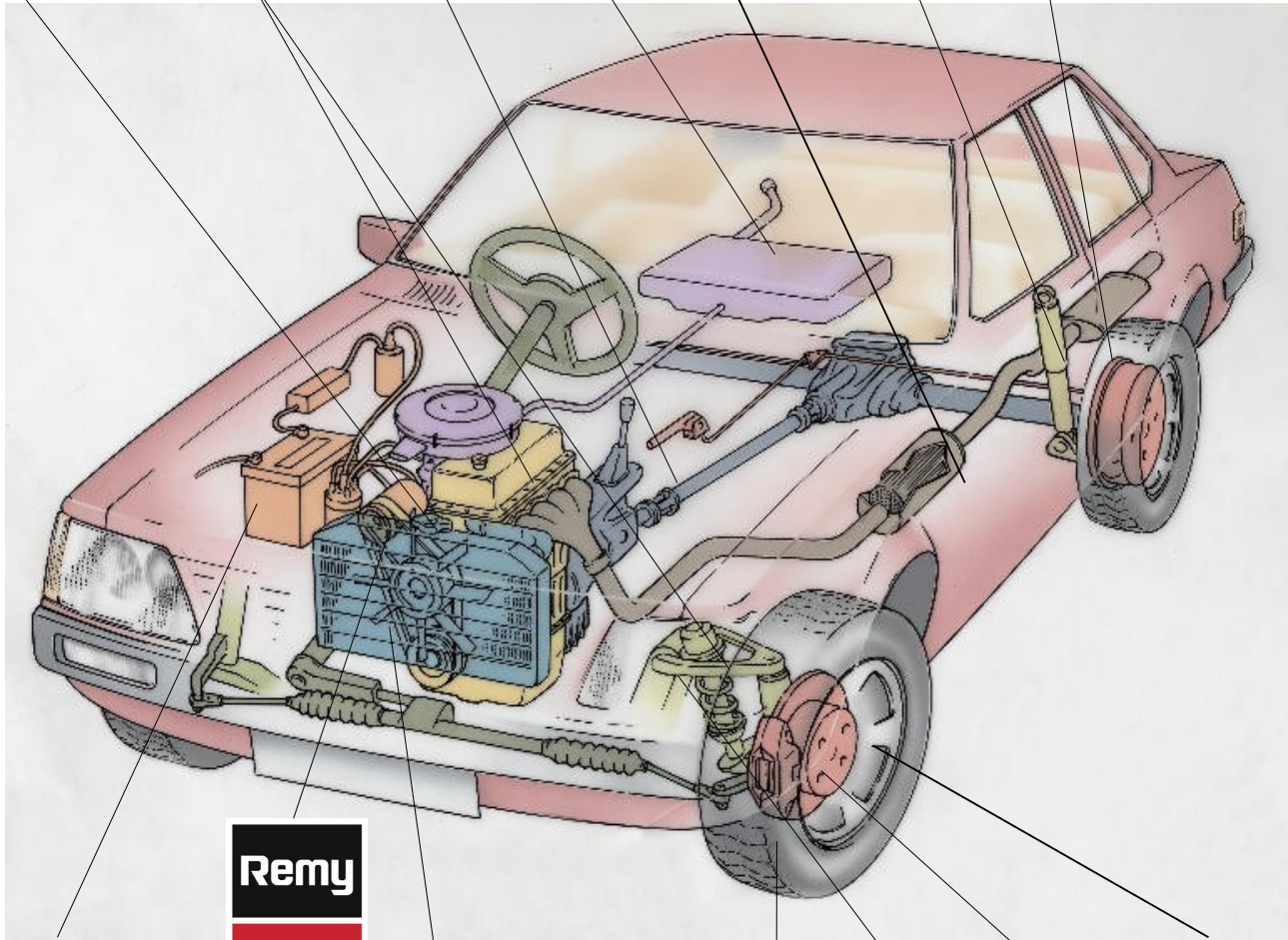
Brake Pads, Shoes & Rotors



GASKETS



Stant MANAFOLDS & CONTROL ARMS



New & Reman Electrical



Hoses, Belts & Tensioners



WAGNER
BRAKE PRODUCTS



Air, Oil, Transmission, Fuel, Cabin Air Filters



Axles, Wiper Motors, Master Cylinders



Prepaid Freight via our truck \$200



UPS service available: Orders received by 3pm ship same day.
Ground service delivers next business day to most destinations in:

MA, RI, CT, & Southern NH

(Cannot Ship Oil, Chemicals or Batteries via UPS)

Prices subject to availability and may change at any time.

Brake System Parts & Accessories

Brake Fittings

Brake Line Nut

- 121003
3/16" – 5 Fittings/Bag
- 121004
1/4" – 5 Fittings/Bag
- 121005
5/16" – 5 Fittings/Bag
- 121006
3/8" – 5 Fittings/Bag

Compression Union Fittings

- 162300
3/16" – 5 Fittings/Bag
- 162400
1/4" – 5 Fittings/Bag
- 162500
5/16" – 5 Fittings/Bag
- 162600
3/8" – 5 Fittings/Bag



Union Fittings

- 123300
3/16" – 5 Fittings/Bag
- 123400
1/4" – 5 Fittings/Bag
- 123500
5/16" – 5 Fittings/Bag
- 123600
3/8" – 5 Fittings/Bag



Full Line Coverage In-Stock.
Call For Details!

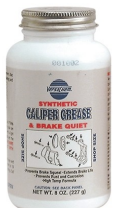
Brake Line Flaring Tool

31310

Kit will work with
3/16", 1/4", 5/16",
3/8" & 1/2" Lines



Caliper Grease /Disc Brake Quiet



26080

- Prevents Squeal & Lubricates
- Applicator Cap With Brush
- Hi-Temp Formula Resists Breakdown From Heat

8 oz Bottle

Brake Lines



Steel Brake Line Coils

- | | |
|----------------------------|----------------------------|
| BLC325
3/16" I.D. x 25' | BLC525
5/16" I.D. x 25' |
| BLC425
1/4" I.D. x 25' | BLC625
3/8" I.D. X 25' |

- Steel Lines Also Available in Straight Lengths with Fittings & Flares Included.
- Domestic, European & Japanese Styles Avail.

Poly-Armour Coils

- | | |
|----------------------------|----------------------------|
| PAC325
3/16" I.D. x 25' | PAC525
5/16" I.D. x 25' |
| PAC425
1/4" I.D. x 25' | PAC625
3/8" I.D. X 25' |

- Poly-Armour Lines Also Available in Straight Lengths with Fittings & Flares Included.



Copper-Nickel Coils

- CNC325
3/16" I.D. x 25'
- CNC425
1/4" I.D. X 25'
- CNC525
5/16" I.D. X 25'
- CNC625
3/8" I.D. x 25'



Tube Nut Assortment

45 Piece Assortment



Includes:

- 9 Different Tube Nuts
- SAE Inverted & ISO Bubble Type
- Metric and Imperial Threads
- Labeled Storage Box

BLFA1



Contact your salesman to order and for pricing.

Halogen Capsules



Boxed

- 9003
- 9004
- 9005
- 9006
- 9007



Blister Packs

- PMBP9003
- PMBP9004
- PMBP9005
- PMBP9006
- PMBP9007
- PMBP1255-H1
- PMBP1255-H3
- PMBP1255-H7
- PMBP1255-H11

Blister Packs

- BP9003
- BP9004
- BP9005
- BP9006
- BP9007
- BP1255-H1
- BP1255-H3
- BP1255-H7
- BP1255-H11



Boxed

- 9003
- 9004
- 9005
- 9006
- 9007

Full Line Coverage of Wagner Mini-Bulbs:
Boxed & Blister Packs Available

Windshield Wipers



Winter Wiper Blades

Universal Bridge Blades

31 Series
Available Lengths:
10"-22", 24", 26", 28"

30 Series
Available Lengths:
11", 13", 15", 16", 18", 20",
22", 24"

AeroVantage Wiper Blades

91 Series
Available Lengths:
12" - 22", 24", 26", 28"



Contour Premium Beam Blades

- | | |
|---------------------|---------------------|
| C14UB & C14OE - 14" | C20UB & C20OE - 20" |
| C15UB & C15OE - 15" | C21UB & C21OE - 21" |
| C16UB & C16OE - 16" | C22UB & C22OE - 22" |
| C17UB & C17OE - 17" | C24UB & C24OE - 24" |
| C18UB & C18OE - 18" | C26UB & C26OE - 26" |
| C19UB & C19OE - 19" | C28UB & C28OE - 28" |

Profile Economy Beam Blades

- | | |
|---------------------|---------------------|
| A14UB & A14OE - 14" | A20UB & A20OE - 20" |
| A15UB & A15OE - 15" | A21UB & A21OE - 21" |
| A16UB & A16OE - 16" | A22UB & A22OE - 22" |
| A17UB & A17OE - 17" | A24UB & A24OE - 24" |
| A18UB & A18OE - 18" | A26UB & A26OE - 26" |
| A19UB & A19OE - 19" | A28UB & A28OE - 28" |

Work Gloves



Brown Jersey
Size L - AG905T



Heavy Duty Suede
Leather
Size L - AG625ET

Latex & Nitrile Gloves



Latex

- AG44100TM - Medium 100/Bx
- AG44100T - Large 100/Bx
- AG44100TXL - Extra-Large 100/Bx

Nitrile

- AG74100TM - Medium 100/Bx
- AG74100T - Large 100/Bx
- AG74100TXL - Extra-Large 100/Bx



Cleaners & Degreasers

Car Wash Soap



Car Wash Powder
25Lb. Bucket – VW4

Car Wash Powder
1Lb. Bucket – VW1

Car Wash Liquid
1 Gal. Bottle - VW5



Glass Cleaners



**Glass Cleaner w/
Ammonia**
12-19oz. cans/cs -
GC1

**Glass Cleaner
Ammonia Free**
12-19oz. cans/cs -
SW050



Engine Cleaner



Foamy Engine Brite
12-17oz. cans/cs - FEB1

Engine Brite
12-15oz cans/cs - EB1



Carburetor Cleaner



Carb Medic
12-12.5 oz. cans/cs
M4814



Super Clean



101723
1 gal. Bottle

101725
5 gal. Bottle

101780
32 oz. Spray Bottle



Concrete & Asphalt Cleaner



SW4
Powdered Concrete
Cleaner

25Lb. Bucket



PartsMaster Brake Clean



0732
**PartsMaster
Brake Clean**
V.O.C. Compliant
12-14oz cans/cs.

**Chlorinated Brake
Clean**
12-19 oz. cans/cs

M720

**Non-Chlorinated Brake
Clean**
12-14 oz. cans/cs

M715



Chemicals

Lubricating / Penetrating Oils



L212
Lubricating Oil
 11 oz spray can: 12/cs

L711
Universal Chain Lubricant
 11 oz spray can: 12/cs



16PB
PB Blaster Penetrating Catalyst
 12 - 11oz cans/cs.



L616
White Lithium Grease
 10.25 oz spray can: 12/cs

L666
White Lithium Grease
 16 oz tub: 12/cs

M914 - Silicone Spray
 11 oz spray can: 12/cs



110054
WD-40
8 oz Smart Straw
 12 cans/cs.



Starting Fluid



M38-15
Thrust Starting Fluid

M39-11
Liquid Fire Starting Fluid



10444
Ultra Lube
Penetrating Oil & Lubricant
 12 - 12oz cans/cs.

- Made from AMERICAN grown Renewable Crops
- Will Not Damage Plastic Parts Like Petroleum Based Products
- No Harsh Odor



Antifreeze/Coolant

- Shell-Zone DEX-COOL - 50/50
 Part #: 9407006021
 1 Gal - 6 Gal/Cs
- Shell-Zone DEX-COOL - Concentrate
 Part #: 9404006021
 1 Gal - 6 Gal/Cs
- Shell-Zone Multi-Vehicle - Concentrate
 Part #: 5066315
 1 Gal - 6 Gal/Cs
- Zerex Original Green - Concentrate
 Part #: ZX001
 1 Gal - 6 Gal/Cs



Additives & Treatments

Limited Slip Differential



- Prevents Rust & Corrosion
- Reduces Operating Temperatures
- Increases Service Life of Components

4 oz. Tube/cs

31904

Transmission Cooler Cleaner



- Removes Dirt, Grease, Grime, Metal Shavings
- Cleans Cooler & Lines
- Does Not Contain Harmful Solvents
- Leaves No Residue Behind

12- 10 oz. Bottles/cs

19001

Transmission Flush



- Removes Varnish Deposits
- Contains Rust/Corrosion Inhibitors
- Does Not Contain Harmful Solvents

12- 10 oz. Bottles/cs

95001



Universal ATF Protectant



- Enhances Performance of All Grades of ATF
- Will Not Alter Sulfur Balance In ATF

12- 10 oz. Bottles/cs

93010



A/C Treatment

A/C System Cleaner

0073

2 Part Cleaner – Kit Includes:

- 1) 1 - 4 oz Can - Air Intake Cleaning Spray
- 2) 1 – 18 oz can – Foaming Evaporator Cleaner



- Quiets Noisy Lifters
- Dissolves Grime, Dirt & Sludge Deposits from Lifters

12- 12 oz. Bottles/cs

M3712

Cooling System Stop Leak



- Does Not Require The System To Be Drained
 - Works With All Coolants
- Permanent Repair Even If Coolant Is Drained Later
- Works On Hard Plastic Parts

6 - 8 oz. Bottles/cs

ST5501

For Use On:

- Radiators
- Cylinder Heads
- Heater Cores
- Engine Blocks
- Water Pump Castings
- Head Gaskets

Contact your salesman to order and for pricing.

Diesel Fuel Anti-Gel / Treatment



Diesel 911

- Re-Liquifies Fuel After Gel-Up Within Minutes
- Thaws Frozen Fuel Filters Eliminating The Need To Change

8025-12
12/1 Qt. Bottles



Diesel Fuel Supplement + Cetane Boost®

- Helps Prevent Gel-Ups to -40°
- Boosts the Cetane Number By Upto 4 Points – Faster Cold Starts

1025-12
12/1 Qt. Bottles

Stabilizer & Isopropyl Treatment

Fuel Stabilizer

8 oz. Bottle
6 Bottles/cs

M5808/6



Ethanol Treatment

- Prevents Damage From Ethanol In Fuel
- Safe for Cars, Trucks & Small Engines

12 - 10 oz. Bottles/cs
22264



ISO-HEET
Fuel System Drier / Anti-Freeze
24 - 12 oz. Bottles/cs

28202



Diesel Fuel Anti-Gel
Treats Fuel Down to
-40 Degrees F
Cleans Injectors

M6912
12-14oz cans/cs.

Other Treatments

10008 Power Steering Stop Leak

12-12 oz. Bottles

10001 Heavy Duty Oil Treatment

12-32 oz. Bottles

10009 Transmission Fix

12-24 oz. Bottles



Fuel Injector Cleaner



10020 Gas/Diesel Injector Cleaner

24 - 5.25 oz. Bottles



16FIC Fuel Injector Cleaner

12 - 15.5 oz. Bottles



65740 Chevron Fuel System Cleaner

- Reduces Pings & Knocks
- Cleans Injectors

12oz.. Bottle

Oil & Transmission Fluids

Specialty ATF



360 – Mercon V
 370 – Dexron VI
 346 – ATF + 4
 341 – ATF Type F
 324 – Dexron/Mercon Max Life
 Recommended in: GM, Ford,
 Chrysler, Toyota, Mazda & Most
 Other Import Vehicles



12 - 1 Qt Bottles / Cs.

Wolfs Head Universal Synthetic ATF



836-92866-56

Hundreds of Applications
 •1 Case Replaces 6 Types of
 ATF on your shelf

12 - 1 Qt Bottles / Cs.



SynPower - Full Synthetic Motor Oil



916 - 0W-20
 927 - 5W-20
 955 - 5W-30
 966 - 5W-40
 935 - 10W-30
 945 - 20W-50



6 - 1 Qt Bottles / Cs.

PartsMaster Transmission Fluid



5353

Dexron III/Mercon

12 - 1 Qt Bottles / Cs.



DuraBlend - Synthetic Blend Motor Oil



317 - 5W-20
 291 - 5W-30
 296 - 10W-30
 301 - 10W-40
 306 - 15W-40
 311 - 20W-50



6 - 1 Qt Bottles / Cs.

PartsMaster Full Synthetic Oil



5927 - 5W-20
 5955 - 5W-30
 5935 - 10W30

12 - 1 Qt Bottles / Cs.



Conventional Motor Oil



129 - 10W-30
 135 - 20W-50
 177 - 5W-30
 141 - 10W-40
 174 - 5W-20



12 - 1 Qt Bottles / Cs.

PartsMaster Conventional Motor Oil



5129 - 10W-30
 5135 - 20W-50
 5177 - 5W-30
 5141 - 10W-40
 5174 - 5W-20
 5380 - 15W-40

12 - 1 Qt Bottles / Cs.



2 Cycle Oil



461 – Multi-Purpose Oil
 12 - 1 Qt Bottles / Cs.
 469 – Outboard Marine Oil
 TC-W3 Certified
 12 – 16 Oz. Bottles / Cs.



VR1 Racing Oil



205 – 10W-30
 211 – 20W-50
 229 – SAE 40
 235 – SAE 50

12 - 1 Qt Bottles / Cs.



Contact your salesman to order and for pricing.

Gear Oil & Grease

Grease



Lubrimatic Grease
10-14oz. Tubes/cs - 11310

Lubrimatic *Red* Grease
10-14oz. Tubes/cs - 11390



Grease



**Synthetic
Multi-Purpose Grease**

985 - 10 - 14.1 Oz. Tubes / Cs.



**GM/Chrysler
European/Japanese Cars**

615 - 10 - 14.1 Oz. Tubes / Cs.

614 - 12 - 1 Lb Tubs / Tray

616 - 6 - 4 Lb Tubs / Tray

Multi-Purpose

609 - 10 - 14.1 Oz. Tubes / Cs.

**Ford/Lincoln/Mercury
Moly-Fortified**

633 - 10 - 14.1 Oz. Tubes / Cs.



Synthetic Gear Oil



975 - 75W-90
982 - 75W-140

12 - 1 Qt Bottles / Cs.



Gear Oil



831 - 80W-90
825 - 85W-140
975 - 75W-90 Synthetic
982 - 75W-140 Synthetic

12 - 1 Qt Bottles / Cs.

5831 - 80W-90

12 - 1 qt. Bottles / cs.



PO44 - 80W-90

5 Gal Pail



Power Steering Fluid



M2734 - Power
Steering Fluid With
Stop Leak

4 - 1 Gal Bottles / Cs.



M2713 - Power Steering
Fluid With Stop Leak

12 - 12 Oz. Bottles / Cs.

M2732 - Power Steering
Fluid With Stop Leak

12 - 22 Oz. Bottles / Cs.



M2714H/6 - **Honda & Acura**
Power Steering Fluid With
Stop Leak

12 - 12 Oz. Bottles / Cs.



Diesel Rated Motor Oil



550019913
15W-40 – Rotella T
3 - 1 Gal Bottles / cs



773634
15W-40 – All Fleet Plus
3 - 1 Gal Bottles / Cs.



550019905
15-W40 – Rottella T
12 - 1 Qtl Bottles / Cs.

70509
15-W40 – Premium Blue
Cummins Rated Oil
4 - 1 Gal Bottles / Cs.

WE KNOW PARTS!



PartsMaster Blower Motors by Four Seasons

- Hundreds of Applications in Stock
- **Premium Quality Without the Price**
- With and Without Mouse Wheels



Don't Be Left Out In The Cold!!!



Hose & Fuel Line Clamps

Heavy Duty Hose Clamps



- | | |
|--------------------------|---------------------------|
| 50006
3/8" – 7/8" | 50032
1 1/2" - 2 1/2" |
| 50008
7/16" – 1" | 50044
2 1/4" – 3 1/4" |
| 50010
1/2" – 1 1/16" | 50048
2 1/2" – 3 1/2" |
| 50012
1/2" – 1 1/4" | 50052
2 3/4" – 3 3/4" |
| 50016
11/16" – 1 1/2" | 50056
3" – 4" |
| 50020
3/4" – 1 3/4" | 50064
2 5/16" – 4 1/4" |
| 50024
1" – 2" | 50072
2 1/2" – 4 1/2" |
| 50028
1 1/4" – 2 1/4" | |

Fuel Injection Hose Clamps



Sizes:

- 52F13 – 7/16" – 1/2"
- 52F15 – 1/2" – 9/16"

Hose Clamp Assortment & Display

Includes 120 Clamps In
The Following Sizes:



- 50006
- 50010
- 50012
- 50020
- 50028
- 50036
- 62004
- 90500 (Display)



Part #: PMHCA1

Micro-Gear Small Hose Clamps



Sizes:

- 62004 – 1/4" – 5/8"
- 62005 – 5/16" – 7/8"

Contact your salesman to order and for pricing.

Diesel Exhaust Fluid



- Required In Most 2010 and Newer Diesel Trucks To Meet Emissions Regulations
- DEF Consumption is approximately 3% of Fuel Consumption (3 Gal of DEF/100 Gal Fuel)
- Keep DEF Tanks Topped off At Each Oil Change To Prevent Power De-Rating

03211
2.5 Gal Cube

02567
4/1 Gallon Bottles

DEF001
55 Gallon Drum (Special Order Only)



WE KNOW PARTS!

In Stock!

Wagner Perfect Stop Brake Pads



- Rubber Core Shims Dampen Vibration & Reduce Squeal
- **Platform Specific Friction Material: Ceramic, Semi-Metalic & NAO**
- Electronic Wear Sensors Included on Specific Applications
- Ceramic Pads Come OE Style Scorched
- Dozens of Numbers Include Hardware & Lubricant



Value Pack Fuses



- Great For Fleet Applications
- Save by Avoiding Retail Size Packages
- Always Have the Most Popular Fuses On-Hand
- 25 Fuses / Package

Available in Popular ATC & ATM Sizes

Amperage Levels Below:

VP/ATC 7 1/2, 10, 15, 20, 25, 30
VP/ATM 7 1/2, 10, 15, 20, 25, 30

Low Profile Fuses



- Used in Many Hybrid Applications
- Always Have the Most Popular Fuses On-Hand
- 5 Fuses / Package

Amperage Levels Below:

- BP/ATM7 1/2LP-RP
- BP/ATM10LP-RP
- BP/ATM15LP-RP
- BP/ATM20LP-RP
- BP/ATM25LP-RP
- BP/ATM30LP-RP



Brake Fluid

DOT 3



Exceeds
DOT 3 Standards
401° Boiling Point

M4412
24 - 12 oz. Bottles / cs

M4432
12 - 32 oz. Bottles / cs

M4434
4 - 1 Gal. Bottles / cs



FC134280
24 - 12 oz. Bottles / cs

FC134281
12 - 32 oz. Bottles / cs

FC134282
6 - 1 Gal. Bottles / cs

FC134283
5 Gal. Pail

DOT 4



Exceeds
DOT 4 Standards
446° Boiling Point

M4512/6
6 - 12 oz. Bottles / cs

M4532
12 - 32 oz. Bottles / cs



FC120838
24 - 12 oz. Bottles / cs

FC120839
12 - 32 oz. Bottles / cs

DOT 5.1



Exceeds
DOT 5.1 Standards
518° Boiling Point

FC133300
24 - 12 oz. Bottles / cs

FC133301
12 - 32 oz. Bottles / cs



Adhesive & Epoxy

Thread Lock

24569
Blue / Medium Hold
6 ml Carded

27569
Red / High Hold
6 ml Carded



24213
Blue / Medium Hold
13 ml Carded

27113
Red / High Hold
13 ml Carded

Epoxy



8265S
J-B Weld Original
2 Oz Carded

8276
J-B Kwik - 4 Minute
2 oz Carded



44209
4 Minute / Grey
2 Oz Carded

43109
5 Minute / Clear
1 oz Carded

Contact your salesman to order and for pricing.

Silicone & Sealants

Hi Temp Red RTV Silicone



65309 – Type 650

- Hi Temp Formula
Protects Up to 650°
& 5000 psi

3 oz Carded



Automotive Black Silicone



27039 – Type 270
- Seals Against: Oil, ATF,
Grease, Water & Steam
- Withstands up to 535°

3 oz Carded



Super Clear Silicone



73009 – Type 7

- Seals Against: Oil, ATF,
Grease, Water & Steam
- Withstands up to 600°

3 oz Carded



Mega Copper Silicone



88839

- **Non-Corrosive to: Steel, Iron,
Aluminum**
- Seals Against: Oil, ATF, Grease,
Water & Steam
- Withstands up to 700° Exposure

3 oz Carded



Mega Black Silicone



99839

- Seals Against: Oil, ATF,
Grease, Water & Steam
- Withstands up to 650°
Exposure

3 oz Carded



Mega Blue Silicone



77739

- **Hi-Revving / Hi-Performance
Engines**
- Seals Against: Oil, ATF,
Grease, Water & Steam
- Withstands up to 700° Exposure

3 oz Carded



Mega Grey Silicone



99939

- **For Import Engines**
- Seals Against: Oil, ATF,
Grease, Water & Steam
- Withstands up to 650° Exposure

3 oz Carded



Anti-Seize Thread Treatment



13109

2 oz Carded

13010

10 oz Bottle w/ Brush

Hi Temp Formula Protects Up
to Constant 1200° Exposure



Exhaust Accessories

Universal Flex Pipes



Flex Only - Without Nipple Ends



<p>1906 (WAL 51015) 2" I.D. X 4"</p> <p>1907 (WAL 51021) 2" I.D. X 6"</p> <p>1908 (WAL 51022) 2" I.D. X 8"</p>	<p>1912 2 1/4" I.D. X 4"</p> <p>1933 3" I.D. X 4"(6" OAL)</p> <p>1934 3" I.D. X 6" (8" OAL)</p> <p>1935 3" I.D. X 8"(10" OAL)</p>
---	---

Flex With Nipple Ends



<p>1919 (WAL 51023) 1 3/4" I.D. X 4" (8" OAL)</p> <p>1921 (WAL 41452) 1 3/4" I.D. X 8" (12" OAL)</p> <p>1923 (WAL 42215) 1 3/4" I.D. X 10" (14" OAL)</p> <p>1925 (WAL 51024) 2" I.D. X 4" (8" OAL)</p> <p>1926 (WAL 51025) 2" I.D. X 6" (10" OAL)</p> <p>1927 (WAL 52252) 2" I.D. X 8" (12" OAL)</p> <p>1929 (WAL 51015) 2" I.D. X 10" (14" OAL)</p> <p>1939 2 1/4" I.D. X 4" (8" OAL)</p>	<p>1940 2 1/4" I.D. X 6"(10" OAL)</p> <p>1941 2 1/4" I.D. X 8" (12" OAL)</p> <p>1931 2 1/4" I.D. X 10"(14" OAL)</p> <p>1942 2 1/2" I.D. X 4"(8" OAL)</p> <p>1943 2 1/2" I.D. X 6" (10" OAL)</p> <p>1944 2 1/2" I.D. X 8"(12" OAL)</p> <p>1932 2 1/2" I.D. X 10" (13.5" OAL)</p> <p>1945 3" I.D. X 4" (8" OAL)</p> <p>1947 3" I.D. X 8" (12" OAL)</p> <p>1948 3" I.D. X 10" (14" OAL)</p>
--	--

Tailpipe Extensions



<p>17620 1 1/2" I.D. X 18"</p> <p>17621 1 3/4" I.D. X 18"</p> <p>17622 1 7/8" I.D. X 18"</p> <p>17623 2" I.D. X 18"</p> <p>17624 2 1/4" I.D. X 18"</p> <p>17627 2 1/8" I.D. X 18"</p>	<p>17630 1 1/2" I.D. X 24"</p> <p>17631 1 3/4" I.D. X 24"</p> <p>17632 1 7/8" I.D. X 24"</p> <p>17634 2 1/4" I.D. X 24"</p>
---	---

Heavy Duty Exhaust Clamps

<p>50020 1 1/2"</p> <p>50022 (WAL 35343) 1 3/4"</p> <p>50023 (WAL 35344) 1 7/8"</p> <p>50024 (WAL 35335) 2"</p> <p>50025 (WAL 35364) 2 1/8"</p>	<p>50026 (WAL 35336) 2 1/4"</p> <p>50027 (WAL 35337) 2 1/2"</p> <p># 60 (WAL 35793) 2 3/4"</p> <p># 61 (WAL 35794) 3"</p>
--	---



3/8" U-Bolt with Zinc Plated Hex Nuts & 11 Gauge Saddle with Reinforcing Ribs



Split Flange Repair Kits

36128
Ford Flange Kit
Includes Flange, Gasket & Spring Bolts



36134
VW/Audi Flange
1 7/8" Pipe – 3 Hole



GM Universal

36130
Fits 2 1/2" Pipe – 2 Hole Round Bolt Holes

36131
Fits 2 1/4" Pipe – 2 Hole Slotted Bolt Holes

36132
Fits 2" Pipe – 2 Hole Slotted Bolt Holes



Nickson 360° Swinger



Universal Swivel Exhaust Hanger



00075 – 9 3/4"

Universal Connectors & Adapters

17501

2" I.D. X 2" O.D.

17502

2 1/4" I.D. X 2" O.D.

17503

2" I.D. X 1 3/4" I.D.

17504

2" I.D. X 2" I.D.

17505

2 1/2" I.D. X 2" O.D.

17506

2" I.D. X 1 1/2" I.D.

17507

2" O.D. X 1 3/4" I.D.

17508

2" I.D. X 1 13/16" O.D.

17509

2 1/4" I.D. X 1 7/8" O.D.

17510

2 1/8" I.D. X 2 1/8" I.D.

17511

2 1/4" I.D. X 2 1/4" I.D.

17512

2 1/4" I.D. X 2 1/4" O.D.

17513

2 1/2" I.D. X 2 1/2" I.D.

17514

2 1/8" I.D. X 2" O.D.



17515

1 3/4" I.D. X 1 3/4" O.D.

17516

2" I.D. X 1 3/4" O.D.

17519

1 1/2" I.D. X 1 1/2" I.D.

17521

2 1/4" I.D. X 2 1/8" O.D.

17522

2 1/2" I.D. X 2 1/4" I.D.

17523

2 1/4" O.D. X 2" I.D.

17525

2 1/8" I.D. X 2 1/8" O.D.

17526

1 7/8" I.D. X 1 3/4" O.D.

17527

1 7/8" I.D. X 2" O.D.

17528

2" I.D. X 1 7/8" O.D.

17536

1 5/8" I.D. X 1 3/4" O.D.

Turndowns & Tail Pipes

17600

1 1/2" I.D. X 12"

17601

1 3/4" I.D. X 12"

17602

1 7/8" I.D. X 12"

17603

2" I.D. X 12"

17604

2 1/4" I.D. X 12"

17605

2 1/2" I.D. X 12"



Universal Tail Pipe Hangers



17144

Equivalent to Walker 35600
Fits All 1 1/2" through 2 1/4"
O.D. Pipes



17150

Universal Wire Hanger



EasySeal Stainless Steel Band Clamps

35620
2"

35621
2 1/4"

35979
2 1/2"

35622
2 3/4"

35978
3"

35977
3 1/2"

35976
4"

35975
5"



Clamp-A-Stud



Sizes:

17350 – 1/4" – 1 3/4"

17351 – 1 1/4" – 2 3/4"

17352 – 2 1/4" – 3 3/4"



Muffler Cement



35958

16 oz Tube – 12 / Cs.



45° Exhaust Elbows



17753

2" I.D. X 2" O.D.

17754

2 1/4" I.D. X 2 1/4" O.D.

17755

2 1/2" I.D. X 2 1/4" O.D.



Grease Delivery

PLEWS & EDELMANN



Standard Pistol Grip
30-200

Professional Pistol Grip
30-300



Professional Lever Action
30-475

Heavy Duty Lever Action
30-465



Suction Gun w/ 1Pint Capacity
30-318

Bottle Top / Gear Oil Pump w/
Flex Hose for 1 Qt Bottles
55-001

Roloc Grinding Discs

AutoBody Master



29250
2" 50 Grit *Green* - 25/Bx
Compare to 3M 01396

29350
3" 50 Grit *Green* - 25/Bx
Compare to 3M 01406

29280
2" Coarse Grit - 25/Bx
Compare to 3M 07480

29281
2" Medium Grit - 25/Bx
Compare to 3M 07481

01396
2" 50 Grit Green - 25/Bx

01397
2" 36 Grit Green - 25/Bx

01398
2" 24 Grit Green- 25/Bx

07480
2" Coarse Grit - 25/Bx

07481
2" Medium Grit - 25/Bx

3M



Shop Lighting

Parts Master



Extension Cords

524007 – 50' 16 Gauge



Drop Lights

Metal Cage w/
Grounded Outlet
524088 – 25' 18 Gauge

Compact fluorescent
w/ Grounded Outlet
524148 – 25' 16 Gauge



Spare Parts

Metal Cage
524109

Handle w/ Outlet
524106

Compact
Fluorescent Bulb
524190

WAGNER
LIGHTING PRODUCTS

Rough Service
Bulbs – 6/bx

50WRS - 50W
75WRS - 75W
100WRS - 100W

Parts Master

Rough Service
Bulbs – 4/bx

PM50RSHD - 50W
PM75RSHD - 75W

Fuel & Oil Storage

Blitz

Fuel Cans

1 Gallon
81005

2 Gallon
81010

5 Gallon
81033

5 Gallon Diesel
(Yellow Can)
81054



Oil Pans/Funnels

5 Gallon Drain Pan
11845

Yellow Mini Funnel
05007

Super Funnel
75-068

Radiator Filler
75-029



Contact your salesman to order and for pricing.

Leak Detection & Diagnostic Products

Sonic Leak Detection

TRACERLINE®

TP-9370

Marksman Master Kit

Amplifies sounds and vibrations that extend beyond the range of the human ear

- Contact Probe can detect bearing and gear vibrations
- Air Tube Probe can detect air & water leaks, failed seals, etc.
- Includes Ultrasonic Emitter which can be placed inside vehicles to test body seals
- Emitter & Receiver run on standard 9V batteries (Approx. 20 hrs of use)

Includes:

Receiver, Headphones, Air Probe, Contact Probe, Ultrasonic Emitter, Padded Impact Case & Batteries



Dyes & Refills

TRACERLINE®

TP-3400-0601

All-In-One™ Full-Spectrum Oil Dye
(6 – 1oz. Bottles)
Enough for up to 24 services



TP-3840-0601

Fluoro-Lite™ Universal A/C System Dye
(6 – 1oz. Bottles)
Enough for up to 24 services



TP-3900-0601

Engine Coolant and Auto Body Leak
Check
(6 – 1oz. Bottles)
Enough for up to 24 services



TP-9770-0108

Universal Dye For BigEZ™ & EZ-Shot™
Injectors (Compatible with ALL
Lubricants and Refrigerants)
(1 – 8oz. Dye Cartridge)
Enough for up to 32 services



TP-9870-0601

Universal Dye Capsule For EZ-Ject™
Injection Systems (Compatible with
ALL A/C Systems)
(6 – ½ oz. Capsules)



Ester & PAG Oils

EF PRODUCTS
AUTO A/C PRODUCTS & SEALING SOLUTIONS

EFP311

Stop Leak (4 OZ)
Contains PAG lubricant and R134a, plus
conditioners that rejuvenate O-rings,
gaskets and other rubber connectors.



EFP491

Ester 100 (Qt)
ISO 100 viscosity Ester for R134a
systems.



E100UVQT

Ester 100 W/ UV Dye (Qt)
ISO 100 viscosity Ester with UV Dye for
R134a systems.



EFP492

PAG 100 (Qt)
ISO 100 viscosity PAG for R134a
systems.



EFP494UV

PAG 150 W/ UV Dye (Qt)
ISO 150 viscosity PAG with UV Dye for
R134a systems



Tire Maintenance & Repair

Valve Stems



- 5040413-50
1.25" L – 50/Box

- 5040414-50
1.50" L – 50/Box

- 5040418-50
2.00" L – 50/Box

- 5040280 (TR600)
High Pressure
1.27" L – 50/Box

- 5040281 (TR602)
High Pressure
2.00" L – 50/Box



Bead Sealant



1010005

- Brush-Cap Can
- Prevents Leaks
- Eases Installation

1 Qt. Can



Rubber Cement

1010003

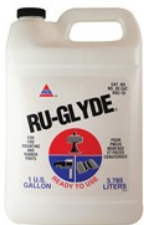
- Vulcanizing Cement
- Brush-Cap Can
- Prevents Leaks
- Eases Installation

1 Qt. Can



Ru-Glyde Tire Lubricant

RG18



- Lubricates Bead to Prevent Damage During Mounting
- Protects Against Tire Slippage After Mounting
- Can Be Used on Bushings To Prevent "Rubber Squeak"



1 Gal Bottle

String Plug Kit



Contains:

- 50 - 4" Fat Brown Strings
- Ergonomic Rasp and Eye-Needle
- Razor Knife & Jar of Lubricant
- Durable Storage Case

5040217T

- Safe for Radial & Bias Ply Tires
- Easy Installation
- Great for Fleets & Garages

Roadside Tire Inflator



0747

- Hose-Top Can
- Inflates Automotive Tires in Minutes



16 oz. Cans - 12/cs

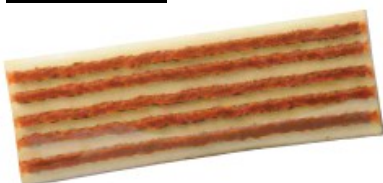
String Plugs



5040216

- 4" Fat Brown String
- Safe for Radial & Bias Ply Tires
- Easy Installation

30 Strings/Bx



Valve Stem Caps

5040250

- Black Plastic (TRVC8)

50 Caps/Bx



17-492-G1

- Green Plastic

100 Caps/Bx



Contact your salesman to order and for pricing.

Quill Plugs



5040230
2 1/8" - 15/bx
5040231
1 7/8" - 20/bx

- Metal Quill for Easy Installation
- Safe for Radial & Bias Ply Tires
- Vulcanizing Gum with Paper Backing

TPMS Mounting Band



17-21103
- TPMS Sensor Band for Ford Vehicles
- Fits 14" - 26" Wheel



Compare to the O.E. / Dealer at Over \$40!

Sold Each

TPMS Parts Assortment



-17-21305
Contains parts to service:
•Ford
•Chrysler
•GM

- Kit Includes:
- 145 "Parts Kits"
 - 100 Valve Cores
 - 200 Plastic Valve Caps
 - Valve Core Torque Tool
 - Application Guide

- 17-21306
Contains Parts to Service:

- Acura
- Honda
- Toyota
- Hyundai
- Infiniti
- BMW
- Audi
- Volkswagen
- Subaru
- Saab
- Nissan
- Mercedes
- Kia
- Lexus
- Other Imports

- Kit Includes:
- 165 "Parts Kits"
 - Application Guide



Wheel Weights



100360



Universal Stick On
1/4 oz Pieces (12/Strip)

30 Strips/Bx



Plain	Coated	Weight
AW025	AW025N	1/4 oz
AW050	AW050N	1/2 oz
AW075	AW075N	3/4 oz
AW100	AW100N	1 oz
AW125	AW125N	1 1/4 oz
AW150	AW150N	1 1/2 oz
AW175	AW175N	1 3/4 oz
AW200	AW200N	2 oz
	AW225N	2 1/4 oz

25 / Box



Plain	Coated	Weight
MC025	MC025N	1/4 oz
MC050	MC050N	1/2 oz
MC075	MC075N	3/4 oz
MC100	MC100N	1 oz
MC125	MC125N	1 1/4 oz
MC150	MC150N	1 1/2 oz
MC175	MC175N	1 3/4 oz
MC200	MC200N	2 oz

25 / Box



Plain	Weight
P025	1/4 oz
P050	1/2 oz
P075	3/4 oz
P100	1 oz
P125	1 1/4 oz
P150	1 1/2 oz
P175	1 3/4 oz
P200	2 oz
P250	2 1/2 oz
P300	3 oz

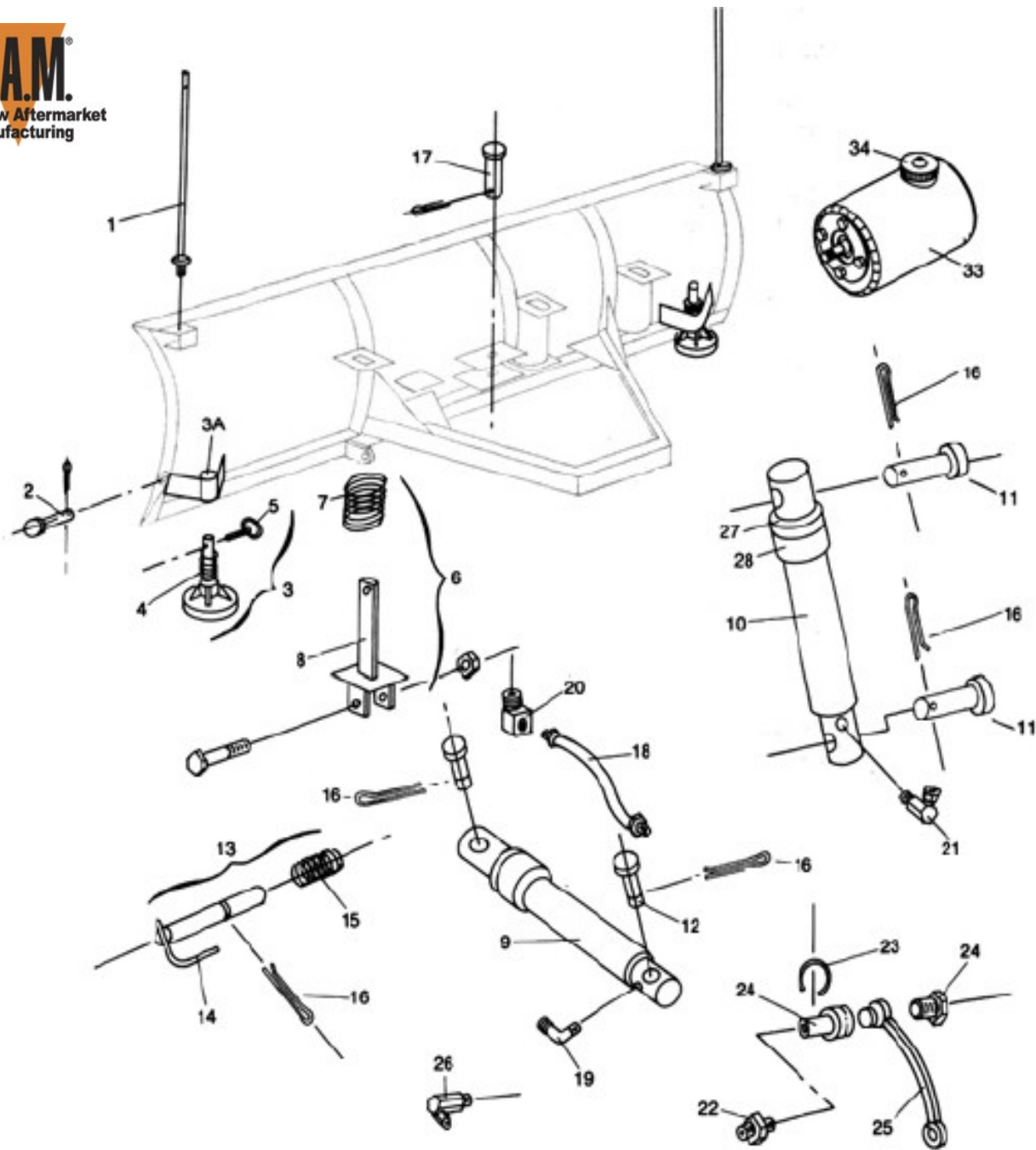
25 / Box



Coated	Weight
T025N	1/4 oz
T050N	1/2 oz
T075N	3/4 oz
T100N	1 oz
T125N	1 1/4 oz
T150N	1 1/2 oz
T175N	1 3/4 oz
T200N	2 oz

25 / Box

Snow Plow Replacement Parts



Cutting Edges Available - Call for full parts list – Provide number from diagram
(This diagram for Fisher)



Snow Plow Hydraulic Oil

Anti Wear Additives
Cold Weather formula
6 – 1 Qt. Bottles/cs

QL17



Replacement Plow Parts

- Guides
- Pins
- Hoses
- And More!
- Call For More Info



For Fisher & Other Top Makes

Contact your salesman to order and for pricing.

Snow Brushes & Scrapers

Telescoping Brush



2610XB

- 48" Telescoping Handle
- Both Brush & Scraper
- Great for Large/Tall Vehicles

10 / Cs.

Deluxe Snow Brush



19513

- 22" Handle for Extra Reach
- Compact Size Stores Easily
- Integrated Scraper

20 / Cs.

Economy Snow Brush

2424FB

- 24" Wooden Handle
- Both Brush & Scraper
- Great for Fleet & Work Vehicles

24 / Cs.



Snow Broom



73100

- Extra Large Foam Head
- Handle Mounts via Standard "Broom" Threads
- Great for Trucks & Trailers
- Won't Damage Paint

1 / Ea..

Hydraulic Oil



AW32
Hydraulic Oil

Anti Wear Additives
Anti Foam Properties

5 Gal Pail
75-105



Hydraulic Jack Oil
Extreme Pressure Additives
For Use in All Jacks

12 – 12 oz. Bottles/cs
M3312



Snow Plow Hydraulic Oil
Anti Wear Additives
Cold Weather formula

6 – 1 Qt. Bottles/cs
QL17



Cleaning, Office & Shop Supplies

Red Rags



- 13" x 14" Rags
- Washable/Reuseable OR Disposable

25 / Pkg
Part #: 40048

Parts Brush



- Stiff Bristles for Better Scouring
- Tapered Plastic Handle

12 / Cs.
Part #: 93032

Wash Brush & Broom



8" Soft Wash Brush
With 48" Handle
93053



10" Wash Brush
(No Handle)
93057



60" Broom Handle
93069



24" Push Broom
93070

Oil Dri



40 Lb. Bag
OD40



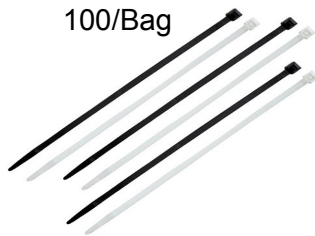
Special Bulk Pricing on
Orders of 6 Bags or
More. Call For Details

Nylon Zip Ties

04-18/C – 4" Clear
04-18UV/C – 4" Black
07-50/C – 7" Clear
07-50UV/C – 7" Black
11-50/C – 11" Clear
11-50UV/C – 11" Black
14-120/C – 14" Clear
14-120UV/C – 14" Black



100/Bag



Ice Melt



SALT

Calcium Chloride &
Rock Salt Blend

50 Lb Pail

Service Station Squeegee



- 8" Squeegee
- Wood handle
Part #: 9031PM



Razor Blades & Scrapers

RZ009
#9 Single Edge
100/BOX



RZ012
#12 Single Edge
100/BOX



LIS 52000
Inspection Sticker Razor
Scraper
Includes 5 Blades

Packing Tape



F4085-05

Clear Carton Sealing Tape
2" x 325'

6 Rolls/Bundle
NON RETURNABLE



Electrical Tape



1060

Black Electrical
Tape
3/4"x 60'



10 Rolls/Sleeve (Full Sleeve Only)

Teflon Tape



25325

Teflon Tape
1/2"x 260'



Sold Each
NON RETURNABLE

Bath Tissue & Hand Towels



Part#: STOTP
 4" x 1,000'
 2 Ply / Jumbo Roll
 (Requires Commercial Dispenser)
 Sold Each / NON RETURNABLE

Part #: STOHT

Kraft Paper Hand Towels
 1 Ply / Non-Perforated
 8" x 350'

Sold Each / NON RETURNABLE



Rags In A Box



75260 – 200 Towels/Box



Stretch Wrap



SF1675

Clear Stretch Wrap
 16" x 1,485'

Sold Each
 NON RETURNABLE



Copy / Fax Paper

Part #: FAX

Blank White Copy/Fax Paper
 20Lb. 92 Bright*
 500 Sheets/Ream
 *Specs. May Vary Slightly

Sold Each
 NON RETURNABLE



Hand Care



1115-06

Original Crème Hand Cleaner

4.5 Lb Cartridge
 6 / Cs



1135-06

Crème Hand Cleaner With
 Fine Italian Pumice

4.5 Lb Cartridge
 6 / Cs



R04824

Cherry Hand Clean
 With Abrasive

1 Gal Bottle
 4 Gal/Cs

1041729

Wall Mount Dispenser

-Heavy Duty Design
 - "Elbow Operated" Lump Lever



Fast Orange Hand Cleaner
 with Pumice

1 Gal. Bottle with Pump
 25-219



NEW

PERFECT STOP™ Brake Rotors



- Baked on Finish is More Durable than Paint
- Resists Scratches, Gouges & Chips to Prevent Rust & Corrosion
- Hundreds of Applications in Stock
- **New Numbers Added Weekly**
 - Precision Balanced
 - Non-Directional Swirl Finish
 - Multiple Vein Configurations



Hundreds Kept in Stock Every Day!!!

Rubber Hose

Barricade® Fuel Injection Hose

- Protects Against Ethanol Degradation
- Meets EPA's **CARB** Standard
- Rated to 225 PSI



BARRICADE®
FUEL INJECTION AND CARBURETION HOSE



27347 1/4" I.D. x 15'	27339 1/4" I.D. x 25'
27348 5/16" I.D. x 15'	27340 5/16" I.D. x 25'
27349 3/8" I.D. x 15'	27341 3/8" I.D. x 25'

Air Hoses



300 PSI	27485 25' x 1/4" I.D. x 1/4" NPT
	27488 25' x 3/8" I.D. x 3/8" NPT
	27489 50' x 3/8" I.D. x 3/8" NPT
200 PSI	27475 25' x 1/4" I.D. x 1/4" NPT
	27476 50' x 1/4" I.D. x 1/4" NPT
	27478 25' x 3/8" I.D. x 3/8" NPT
	27479 50' x 3/8" I.D. x 3/8" NPT



Vacuum Line

27041 7/64" x 25'
27042 5/32" x 25'
27043 7/32" x 25'



Barricade® Carburetion Fuel Line

- Protects Against Ethanol Degradation
- Meets EPA's **CARB** Standard
- Rated to 50 PSI



27313 1/4" I.D. x 25'
27314 5/16" I.D. x 25'
27315 3/8" I.D. x 25'



BARRICADE®
FUEL INJECTION AND CARBURETION HOSE

Heater Hose



28400 1/2" x 50'
28401 5/8" x 50'
28402 3/4" X 50'



Contact your salesman to order and for pricing.

Drain Plug Assortment



89 Piece Assortment Includes:



Drain Plugs

Part #:	Size:	Qty:
ODP-00007	M14X1.5	5
ODP-00008	M14X1.25	3
ODP-00009	M12X1.75	5
ODP-00010	M12X1.5	3
ODP-00011	M12X1.25	3
ODP-00012	M16X1.5	2
ODP-00013	M18X1.5	2
ODP-00014	M22X1.5	1
ODP-00015	M26X1.5	1
ODP-00016	1/2-20	3
ODP-00017	5/8-18	2
ODP-00018	3/4-16	2
ODP-00019	M20X1.5	2

Gaskets

Part #:	Size:	Qty:
ODP-65268	M14	Copper 5
OPD-65269	9/16 / M14	Metal/Rubber 5
ODP-65270	1/2 / M12	Nylon 5
ODP-65271	1/2 / M12	Copper 5
ODP-65272	9/16 / M14	Nylon 5
ODP-65274	1/2 / M12	Metal/Rubber 5
ODP-65290	M12	Aluminum 5
ODP-65292	M14	Aluminum 5
ODP-65301	M12	Synthetic 5
ODP-65327	7/16 / M12	Rubber 5
ODP-66451	M12	Rubber 5

Refills Parts Kept In Stock.

Air Line Accessories



Service Station
Inflator-Gauge

- 20-120 PSI Readout
- Serviceable Parts
- Heavy Duty Design
- Includes Dual Air Chuck

17-850

Blow Gun

- 1/4" Female NPT
- Hanging Hook

18-203



Dual Foot Air Chuck

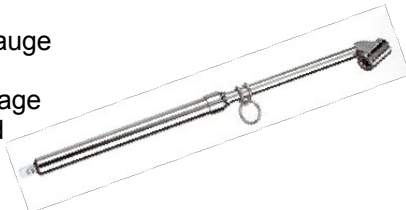
- 1/4" Female NPT
- Dual Sided

17-383

Dual Foot Air Gauge

- 10-150 PSI Range
- Dual Sided

17-545



We have a Full Line of Air Accessories to Fit Your Needs. Ask Your Salesman For A Catalog!

Plugs & Couplers



12-125
1/4" TF Coupler - 1/4" Male NPT

12-135
1/4" TF Coupler - 1/4" Female NPT



13-125
1/4" TF Coupler - 1/4" Male NPT

13-135
1/4" TF Coupler - 1/4" Female NPT

Many other sizes and styles available Including:
Lincoln / Industrial-Milton / Aro / Tru-Flate

Booster Cables



522004

- 20' Heavy Duty 4 Gauge
- 500 Amp
- Parrot Jaws



521606

- 16' Medium Duty 6 Gauge
- 400 Amp
- Alligator Jaws

Batteries & Electrical Supplies

Split Loom



- CL4S - 50' x 1/4"
- CL5S - 50' x 3/8"
- CL6S - 50' x 7/16"
- CL11S - 50' x 3/4"
- CL12S - 50' x 1"
- CL13S - 50' x 1 1/2"

Heat Shrink Tubing

- HP3550: 20-18 ga
6" pcs - 3/pkg - Red
- HP3570: 16-14 ga
6" pcs - 3/pkg - Blue
- HP3560: 12-10 ga
6" - 3/pkg - Yellow



Insulated Butt Connectors

- HP1210: 22-18 ga
70/pkg - Red
- HP1730: 16-14 ga
70/pkg - Blue
- HP2190: 12-10 ga
60/pkg - Yellow



Quick Splice Connectors



- HP1240: 22-18 ga
25/pkg - Red
- HP1760: 16-14 ga
25/pkg - Blue
- HP2170: 12-10 ga
12/pkg - Yellow

Pigtails & Sockets

Many popular applications:

- Headlamps
- Blower Motors
- Exterior Lighting
- Accessory Lighting
- Trailers
- And More

- HP3940: 3 Wire
9004 & 9007 Bulbs
- HP4610: 2 Wire
GM & Ford: Marker, Parking,
License Plate
161, 168, 194 Bulbs



Battery Terminals



- Heavy Duty Top Post
10 Terminals / Card
903-10
- Heavy Duty Side Post
7 Terminals / Card
905-7

Primary Wire Spools & Clam Shells

- C14EB: 14 ga
100'/roll - Black
- C14ER: 14 ga
100'/roll - Red
- C16EB: 16 ga
100'/roll - Black
- C16ER: 16 ga
100'/roll - Red



- HP5900: 14 ga
20'/clamshell - Black
- HP5880: 14 ga
20'/clamshell - Red
- HP5790: 16 ga
30'/clamshell - Black
- HP5780: 16 ga
30'/clamshell - Red



Other Gauges & Colors Available

Batteries

Lawn & Garden / Small Machinery

- GT-H - Group U1
- GT-R - Group U1R

Heavy Duty / Truck

- 31XPD - Group 31 Thrd. Post
- 31XPE - Group 31 Std. Post

EXIDE
BATTERIES



Full Line Coverage

65CP

Specially Designed for F-Super Duty & Crown Vic Applications with Extreme Power Demand (*With Oversized Plates It Weighs 5 Lbs More Than a Standard Group 65 Battery*)

Large Warehouse Inventory Covers 98% of Vehicles in Operation